

**322/5 Verona Drive Wentworth Point NSW**

1  1  1 

Enjoy a superb lifestyle in the iconic 'Atlas' building located in the centre of Wentworth Point. Situated in a heart location, close to Marina Shopping Centre offers convenience with peaceful living. This home offers a bright north facing aspect for both bedroom and living room, open plan living with low strata.

**Price** : \$ 575,000  
**Building Size** : 78 sqm  
**View** : <https://www.atlasre.com.au/sale/nsw/inner-west/wentworth-point/residential/apartment/6732874>

**Main Features Include:**

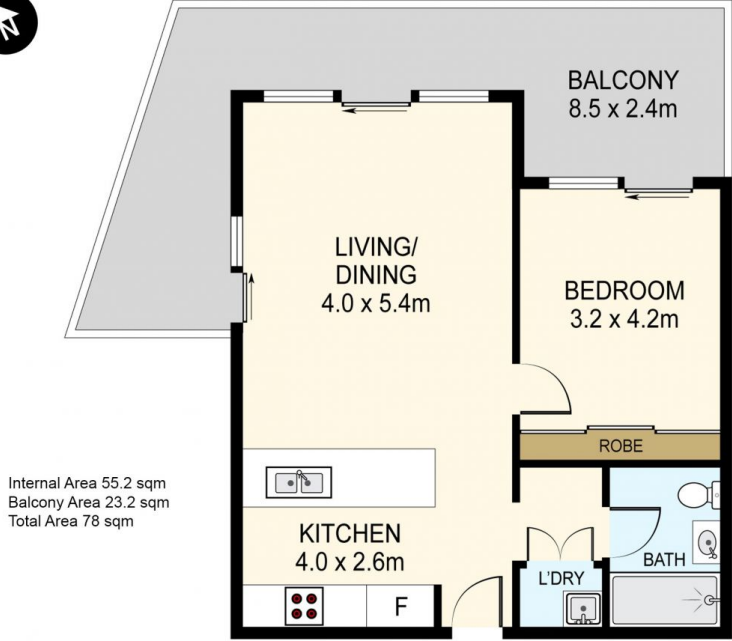
- Modern, open plan layout with free-flowing living/dining area access to balcony
- Oversized, modern kitchen with stainless steel appliances
- King designed bedroom with built-in robes & balcony access
- Security video intercom at main and car park entrances
- Security lift access
- One car space with additional storage cage
- Split air conditioning with better energy saving solution



**Jane Lin**  
02 8776 8707

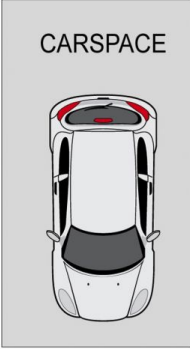


**Gimmy Pan**  
02 8776 8707



Internal Area 55.2 sqm  
Balcony Area 23.2 sqm  
Total Area 78 sqm

2.4X1.4m  
STORE



DISCLAIMER: THIS IS FOR ILLUSTRATIVE PURPOSES ONLY.  
ALL DIMENSIONS ARE APPROXIMATE AND IT DOES NOT  
CONSTITUTE PART OF ANY LEGAL DOCUMENTS.

ADDRESS:

322 / 5 Verona Drive, Wentworth Point